

CASHWRAP COUNTER DETAIL
EXPRESS 5 REGISTER CASHWRAP (STRAIGHT)

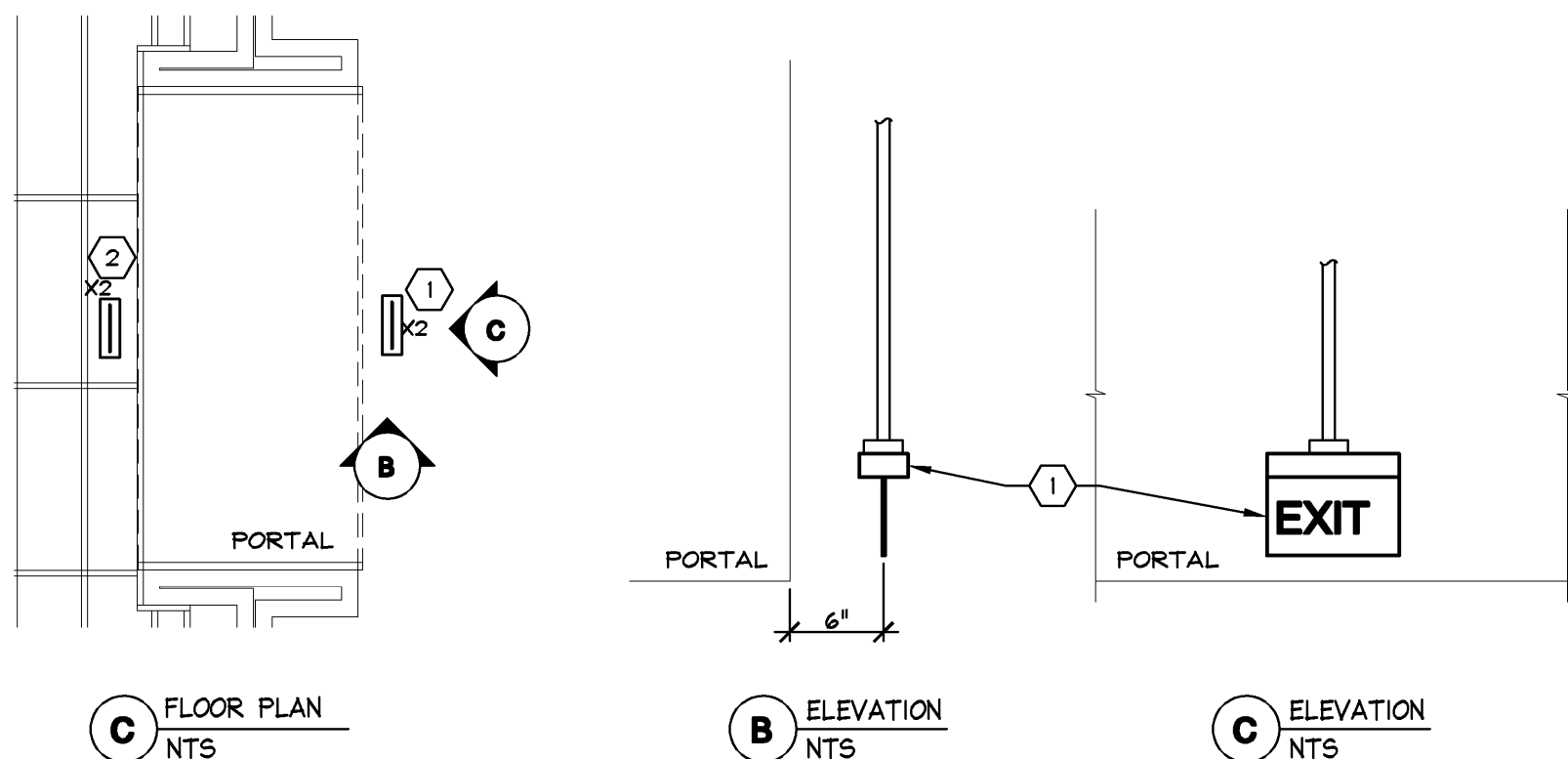
CASHWRAP CODED NOTES

- REGISTERS (POS) SHALL SHARE A 20 AMP, 120 VOLT DEDICATED CIRCUIT AND UTILITY POWER (UP) SHALL SHARE A 20 AMP, 120 VOLT CIRCUIT. STUB UP 3/4" CONDUIT 1" A.F.F. WHERE SHOWN ON DETAIL. INSTALL FLEXIBLE METAL CONDUIT FROM STUB-UP TO SHALLOW 4X4 J-BOX AND CONNECT TO QUAD RECEPTACLES. CUT AND PATCH FLOOR AS REQUIRED TO ROUTE CONDUIT TO WALL AS SHOWN. ROUTE UP INSIDE WALL TO CEILING SPACE AND CONNECT TO PANEL LOCATED INSIDE IFS ENCLOSURE. REFER TO POWER PLAN AND PANEL SCHEDULES FOR CIRCUIT DESIGNATIONS.
- TELEPHONE OUTLET BEHIND CURTAIN ABOVE BACKWRAP. TELEPHONE WIRE AND RJ45 JACK BY OTHERS. SEE NOTE (6).
- DATA OUTLET LOCATED AT EACH REGISTER IN CASHWRAP. CAT 5E CABLE AND RJ45 JACK. STUB UP 1" CONDUIT 1" A.F.F. WHERE SHOWN ON DETAIL. INSTALL FLEXIBLE METAL CONDUIT FROM STUB-UP TO SHALLOW 4X4 J-BOX FOR DATA AND TELEPHONE. CUT AND PATCH FLOOR AS REQUIRED TO ROUTE CONDUIT TO WALL AS SHOWN. ROUTE UP INSIDE WALL TO CEILING SPACE AND CONNECT TO L.V. SECTION OF THE IFS. WIRE FOR DATA LINES TO BE PULLED AND CONNECTED BY P.O.S. CONTRACTOR.
- CONNECT 20 AMP, 120V, CIRCUIT FOR QUAD RECEPTACLE UTILITY POWER IN BACKWRAP. CONNECT TO CIRCUIT AS SHOWN ON POWER PLAN.
- DATA OUTLET ON INSIDE OF BACKWRAP UNIT. CAT 5E CABLE AND RJ45 JACK BY OTHERS.
- 3/4" TELEPHONE CONDUIT WITH PULLWIRE TO L.V. SECTION OF THE IFS BY ELECTRICAL CONTRACTOR. RJ45 JACK ON LINES #1 AND #2 FOR TELEPHONE BY OTHERS.
- EDWARDS 1064-65 BUZZER MOUNTED ON WALL BEHIND CURTAIN. SEE POWER PLAN FOR ADDITIONAL INFORMATION. CONNECT TO DOORBELL SYSTEM.
- 1" SPARE CONDUIT CONTINUED AND STUBBED TO 24" ABOVE IFS AND LABELED "CASHWRAP SPARE".

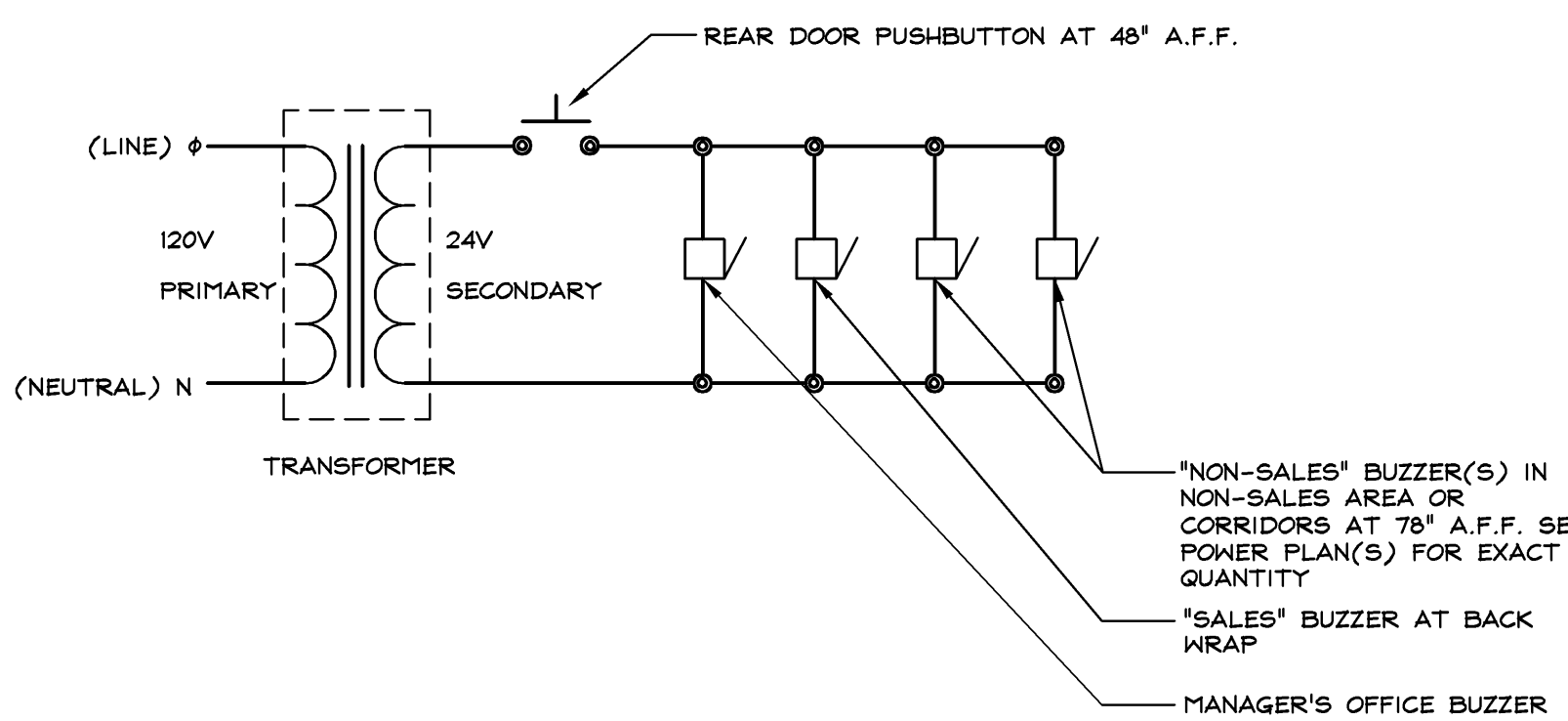
GENERAL NOTES

- RUN METAL CLAD (MC) CABLE TO EACH RECEPTACLE FROM J-BOXES THRU WIREWAY WITHIN CASHWRAP COUNTER.
- WIRING FROM CONDUIT STUB-UPS TO J-BOXES ARE TO BE RUN IN FLEXIBLE METAL CONDUIT.
- LABEL AND TAG ALL PULLWIRE RUNS AT EACH END WITH ORIGIN/DESIGNATION.
- DATA TERMINALS AND CONNECTIONS BY P.O.S. CONTRACTOR.
- REFER TO ARCHITECTURAL SHEETS FOR ADDITIONAL INFORMATION.

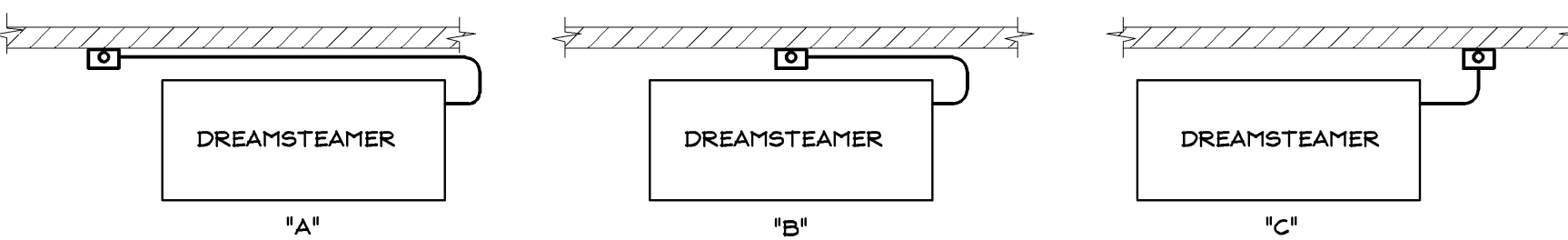
- EXIT SIGN SHALL BE TOP MOUNTED TO J-BOX SUSPENDED FROM CEILING, WITH BOTTOM OF FIXTURE 11'-2" A.F.F. AND 6" AWAY FROM FINISHED SOFFIT/PORTAL. COORDINATE WITH ARCHITECTURAL SHEETS.
- EXIT SIGN TO BE SURFACE MOUNTED ON CEILING 6" AWAY FROM FINISHED SOFFIT. LOCATION TO BE COORDINATED WITH ARCHITECTURAL ELEMENTS OF CEILING.



EXIT SIGN DETAIL

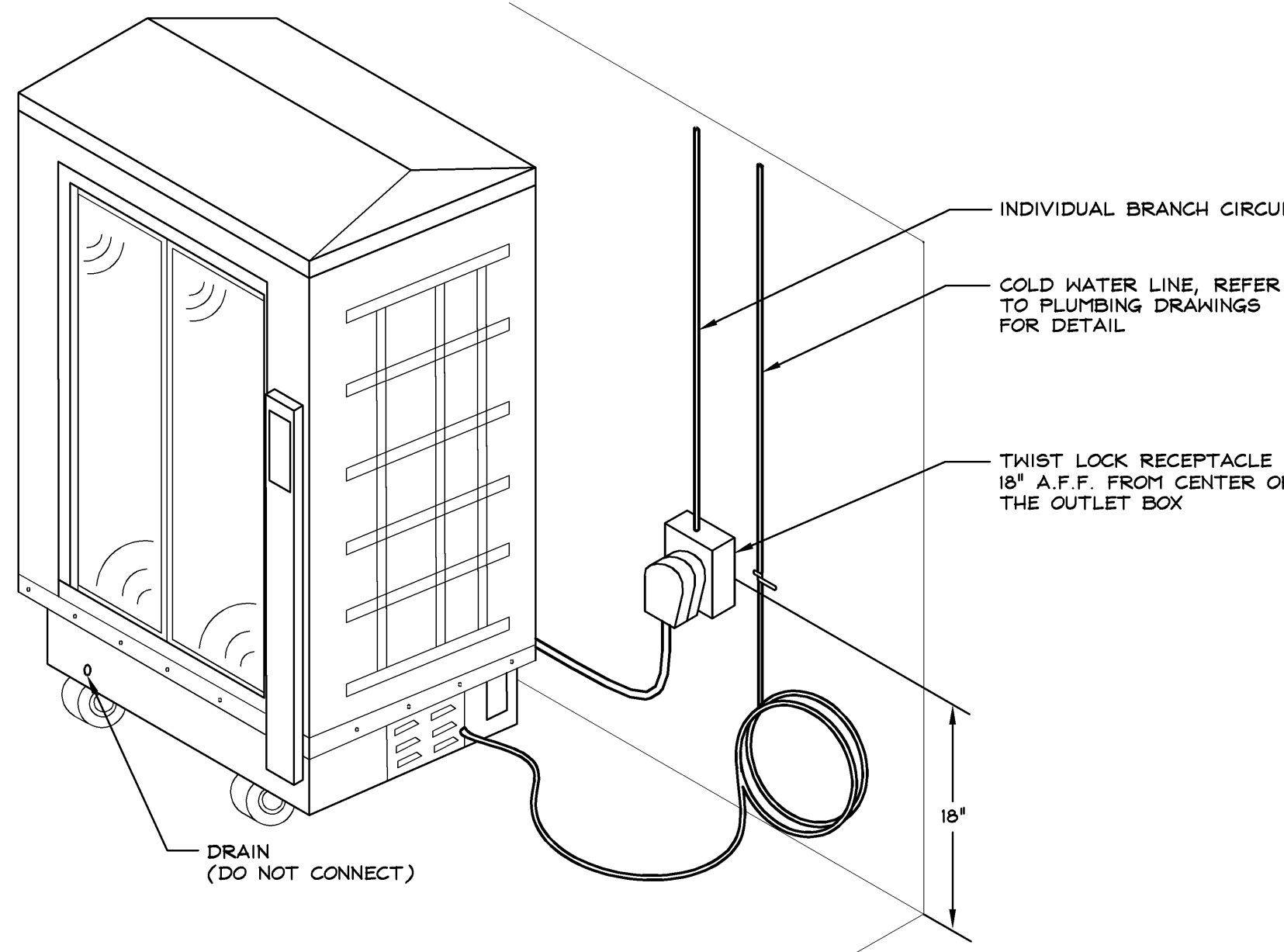


DELIVERY BUZZER SCHEMATIC



NOTE: CONTRACTOR TO LOCATE OUTLET WHERE MOST ACCESSIBLE, BASED ON DETAIL.

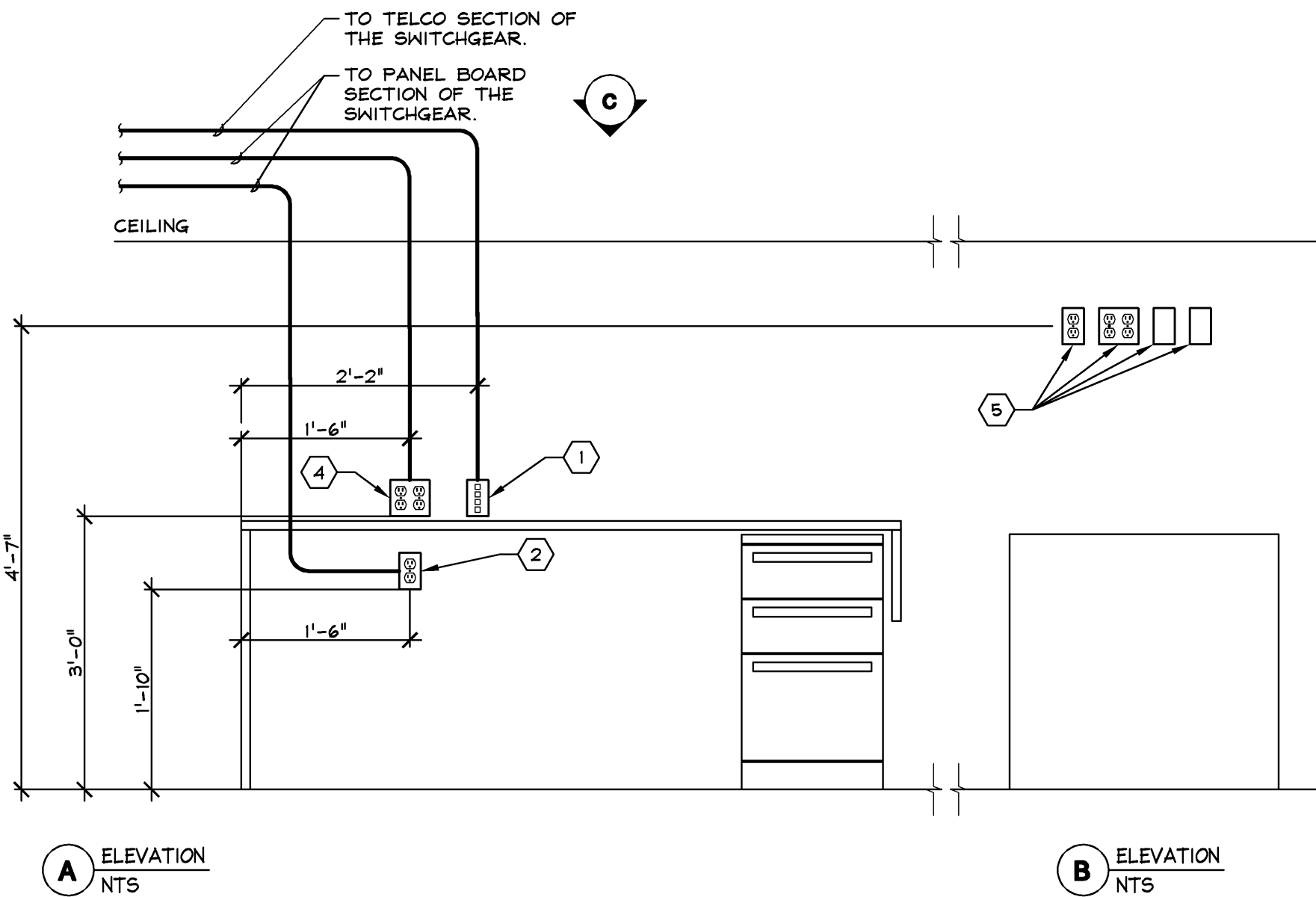
DREAMSTEAMER OUTLET LOCATION



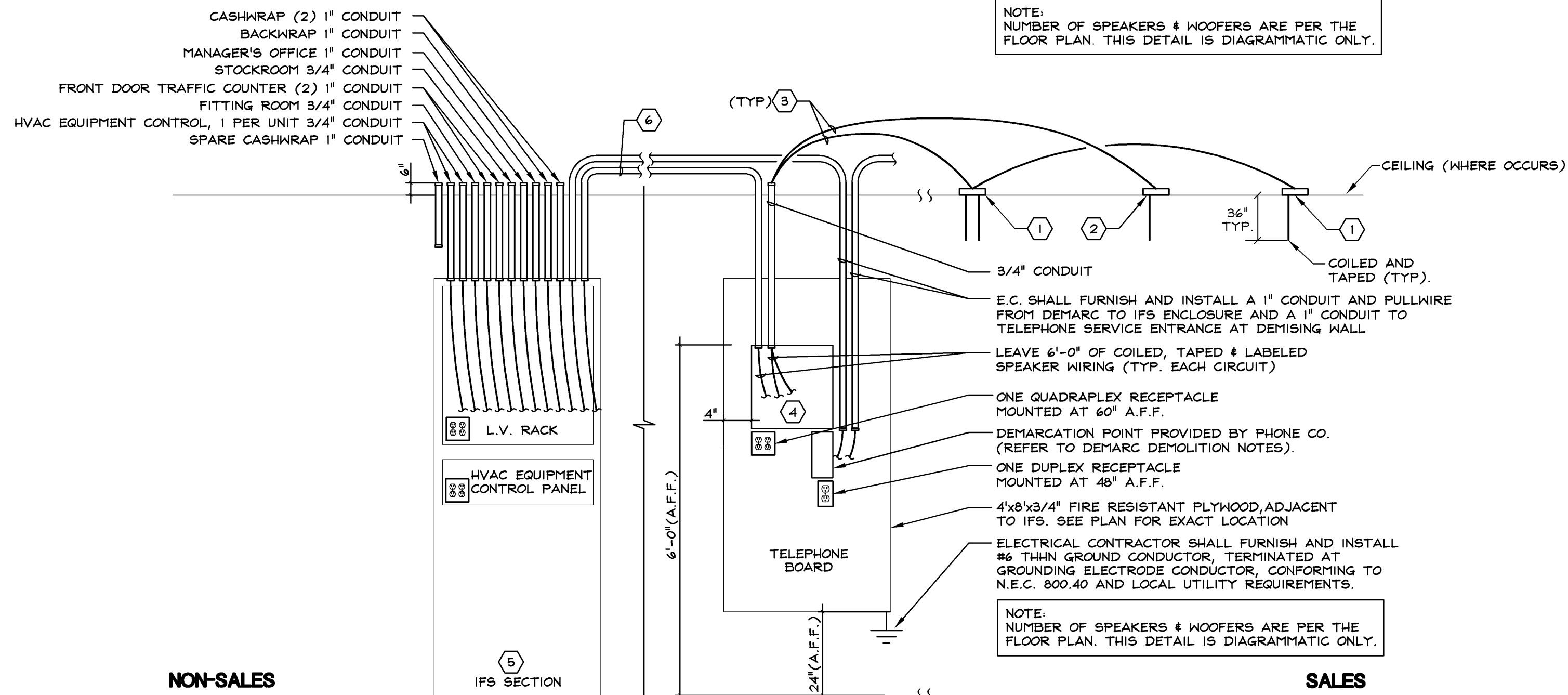
SPECIFICATION	SERIES 2200
	THREE PHASE
MODEL (208 VOLTS)	2200-308
MODEL (240 VOLTS)	2200-340
BRANCH CIRCUIT RATING	30 AMPS
RECEPTACLE	
NEMA CONFIGURATION	NEMA L15-30R
CATALOG NO.	PASS & SEYMOUR L-15 30R
POWER	9,000 WATTS
WIDTH	48 INCHES
DEPTH	30 1/2 INCHES
HEIGHT	88 INCHES
WEIGHT (WITH WATER)	300 LBS.
WATER CAPACITY (APX.)	7 GALLONS
WATER USAGE (APX.)	1/2 GALLONS PER HOUR

DREAMSTEAMER DETAIL

TRAFFIC COUNTER DETAIL



MANAGER'S OFFICE DETAIL



SOUND SYSTEM CODED NOTES

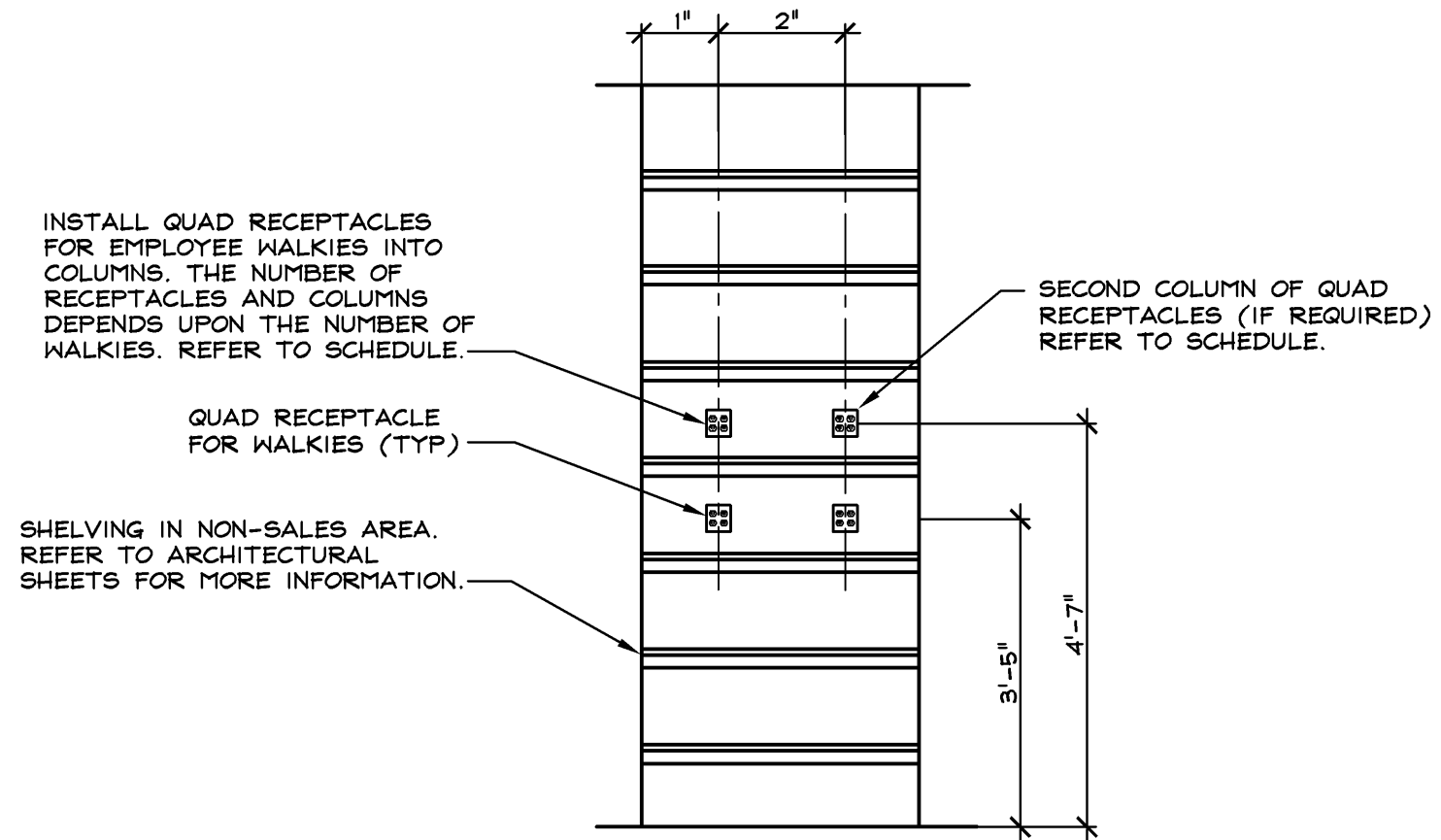
- COAXIAL SPEAKER ENCLOSURE (#CP87) AND SUPPORTS. LEAVE 36" SLACK SPEAKER WIRE.
- SUB-WOOFER SPEAKER ENCLOSURE (#DX1312) AND SUPPORTS. LEAVE 36" SLACK SPEAKER WIRE.
- SPEAKER WIRE "BEST PRACTICE" #25224 #18 AWG OR "DECARON" #170 #18 AWG ONLY. NO SUBSTITUTIONS. RUN WIRE (IN CONDUIT, IF REQUIRED BY LOCAL CODE. SEE ELECTRICAL SPECIFICATIONS FOR EXACT REQUIREMENTS) BETWEEN SPEAKER ENCLOSURES. NUMBER OF SPEAKERS PER PLAN. RUN WIRE IN RELATED CONDUIT AT SOUND SYSTEM CABINET. LABEL AND TAG SPEAKER WIRE HOMERUNS AT SOUND SYSTEM CABINET AS TO AREA SERVED (I.E. SALES COAX, SUB-WOOFER, FITTING ROOM, NON-SALES, ETC.).
- SOUND SYSTEM CABINET. DWR SERIES 19" SECTIONAL WALL RACK ENCLOSURE, MODEL NO. 24-22. REFER TO SPECIFICATION.
- IN IFS SECTION. REFER TO MANUFACTURERS SPECIFICATIONS.
- RUN 1" CONDUIT TO TELEPHONE BOARD. MUSIC VENDOR WILL RUN (2) PAIR OF #20 AWG SPEAKER WIRE FOR EACH TELEPHONE SYSTEM AS REQUIRED, AND LABEL AND TAG WIRE AT EACH END (THIS: "M.O.H." AND "TELECO PAGE").

NOTE: REFER TO RESPONSIBILITY SCHEDULE.

DWR SERIES 19" SPECIFICATIONS

EIA COMPLIANT 19" WALL-MOUNT RACK SHALL BE MIDDLE ATLANTIC PRODUCTS/DATATEL MODEL #DWR-24-22. PART NUMBER SHALL BE SUFFIXED WITH "19" TO INDICATE THAT THE RACK SHALL SHIP ASSEMBLED WITH LOCKING FLEXIGLASS DOOR PRE-INSTALLED. OVERALL DIMENSIONS SHALL BE 23.4"x24"x22"D. WEIGHT CAPACITY SHALL BE 3000#. CENTER SECTION AND BACKPANEL SHALL BE 16-GAUGE STEEL, PHOSPHATE PRE-TREATED AND FINISHED IN BLACK POWDER COAT. RACKRACK SHALL BE CONSTRUCTED OF 11-GAUGE STEEL WITH TAPPED MOUNTING HOLES IN UNIVERSAL EIA SPACING WITH BLACK AND COAT FINISH AND MARKED RACKSPACES. RACK SHALL BE CONSTRUCTED TO SWING OPEN FOR COMPONENT CABLING ACCESS. CENTER SECTION SHALL PIVOT FOR EITHER LEFT OR RIGHT OPENING. BACKPANEL SHALL BE FITTED WITH FACTORY INSTALLED LOCK AND LATCH CAPABLE OF ACCEPTING PADLOCK. RACK SHALL HAVE A REMOVABLE KNOCKOUT PANEL WITH 1/2", 3/4", AND 1-1/2" ELECTRICAL KNOCKOUTS INSTALLED IN BOTTOM OF BACKPANEL, AND A REMOVABLE REAR KNOCKOUT PANEL WITH 1/2", 3/4", 1" AND 1-1/2" ELECTRICAL KNOCKOUTS, AND ENC. KNOCKOUTS FOR UHF/VHF ANTENNAS INSTALLED IN TOP OF BACKPANEL. LARGE LASER KNOCKOUT ON BACKPANEL SHALL HAVE 12-1/2"x12-1/2" OPENING FOR CABLE PASS-THROUGH. FAN KNOCKOUTS ON TOP AND BOTTOM SHALL ALLOW FOR INSTALLATION OF UP TO FOUR 4-1/2" FANS. TOP, BOTTOM AND SIDES SHALL FEATURE VERTICAL VENT PATTERN. RACK SHALL BE UL LISTED IN THE US AND CANADA.

NO OF WALKIES	QUAD RECEPT'S. REQUIRED	COLUMNS OF QUAD RECEPT'S.
0-12	2	1
13-24	4	2



EMPLOYEE WALKIE RECEPTACLE DETAIL

CODED NOTES

- QUAD OUTLET FOR DATA, TELEPHONE, FAX, AND ROLLING. ELECTRICAL CONTRACTOR TO SUPPLY AND INSTALL SINGLE GANG JUNCTION BOX AND RUN A 1" EMPTY CONDUIT, WITH PULLWIRE, BACK TO TELCO SECTION OF THE SWITCHGEAR. DATA/TELEPHONE WIRE AND COVERPLATE BY OTHERS.
- 20 AMP, 120 VOLT, DEDICATED CIRCUIT AND RECEPTACLE IN A SINGLE 3/4" CONDUIT BACK TO PANELBOARD SECTION OF THE SWITCHGEAR FOR COMPUTER TERMINAL. DO NOT SHARE ANY PART OF THIS CIRCUIT WITH ANY OTHER BRANCH CIRCUITS. CONNECT TO CIRCUIT SHOWN ON POWER PLAN.
- 20 AMP, 120 VOLT CIRCUIT AND DUPLEX RECEPTACLE FOR UTILITY POWER, IN A SINGLE 3/4" CONDUIT BACK TO PANELBOARD SECTION OF THE SWITCHGEAR. CONNECT TO CIRCUIT SHOWN ON POWER PLAN.
- 20 AMP, 120 VOLT CIRCUIT AND QUAD RECEPTACLE FOR UTILITY POWER, IN A SINGLE 3/4" CONDUIT BACK TO PANELBOARD SECTION OF THE SWITCHGEAR. CONNECT TO CIRCUIT SHOWN ON POWER PLAN.
- QUADRAPLEX RECEPTACLE, DUPLEX RECEPTACLE, TWO SINGLE GANG JUNCTION BOXES, AND COVERPLATES FOR SECURITY SYSTEM. MOUNT AT 55" A.F.F. TO MIDDLE OF QUADRAPLEX. COORDINATE EXACT LOCATION WITH ARCHITECT PRIOR TO ROUGH-IN AND WORK COMMENCEMENT.

PROJECT INFORMATION:

EXPRESS
OUTLET MALL OF SAVANNAH
200 TANGER OUTLET BLD.
SPACE NO. 521
POOLER, GA 31322

REVISIONS:

REQUIRED BY:	DATE:

INDICATES NO REVISION TO THIS SHEET



M-Engineering
750 Brookside Blvd.
Westerville, Ohio 43081
phone: 614.839.4639
fax: 614.839.2222

ELITE CONSTRUCTION GROUP
LAKE JACKSON, TX
PHONE: 979.385.0712
NOTE: THESE PRINTS HAVE BEEN REDUCED BY 50 PERCENT SCALE. WILL BE 50 PERCENT OF WHAT IS NOTED ON PLANS

DATE ISSUED: 09/26/14
DESIGNED BY: CDH
DRAWN BY: CDH
CHECKED BY: DFG

ELECTRICAL DETAILS

DRAWING NUMBER:

E04.2

5 REG. CASHWRAP/BACKWRAP DETAIL

N

J

(JBL-RACK) SOUND SYSTEM AND I.T. SYSTEM INSTALLATION DETAIL

A

1718

OUTLET
SPRING 2015
140414

NEW PACKAGE: DG
GENERATION: 94982
A/E PROJECT #:

DESIGN TYPE: ES&C
PROJECT #:

THESE DRAWINGS AND SPECIFICATIONS WERE PREPARED FOR THE USE OF A SPECIFIC CLIENT AND PROJECT. ANY CHANGES OR MODIFICATIONS TO THESE DRAWINGS OR SPECIFICATIONS MUST BE APPROVED BY THE DESIGNER. THE DESIGNER SHALL BE RESPONSIBLE FOR THE ACCURACY AND COMPLETENESS OF THESE DRAWINGS AND SPECIFICATIONS. THE DESIGNER SHALL NOT BE RESPONSIBLE FOR THE ACCURACY OR COMPLETENESS OF ANY INFORMATION OBTAINED FROM ANY OTHER SOURCE. THE DESIGNER SHALL NOT BE RESPONSIBLE FOR THE ACCURACY OR COMPLETENESS OF ANY INFORMATION OBTAINED FROM ANY OTHER SOURCE. THE DESIGNER SHALL NOT BE RESPONSIBLE FOR THE ACCURACY OR COMPLETENESS OF ANY INFORMATION OBTAINED FROM ANY OTHER SOURCE.

EXPRESS
EXPRESS FASHION OPERATIONS, LLC
d/b/a STORE DESIGN & CONSTRUCTION
1 Express Drive Columbus, Ohio 43230
Telephone: 614.474.4001 Express.com